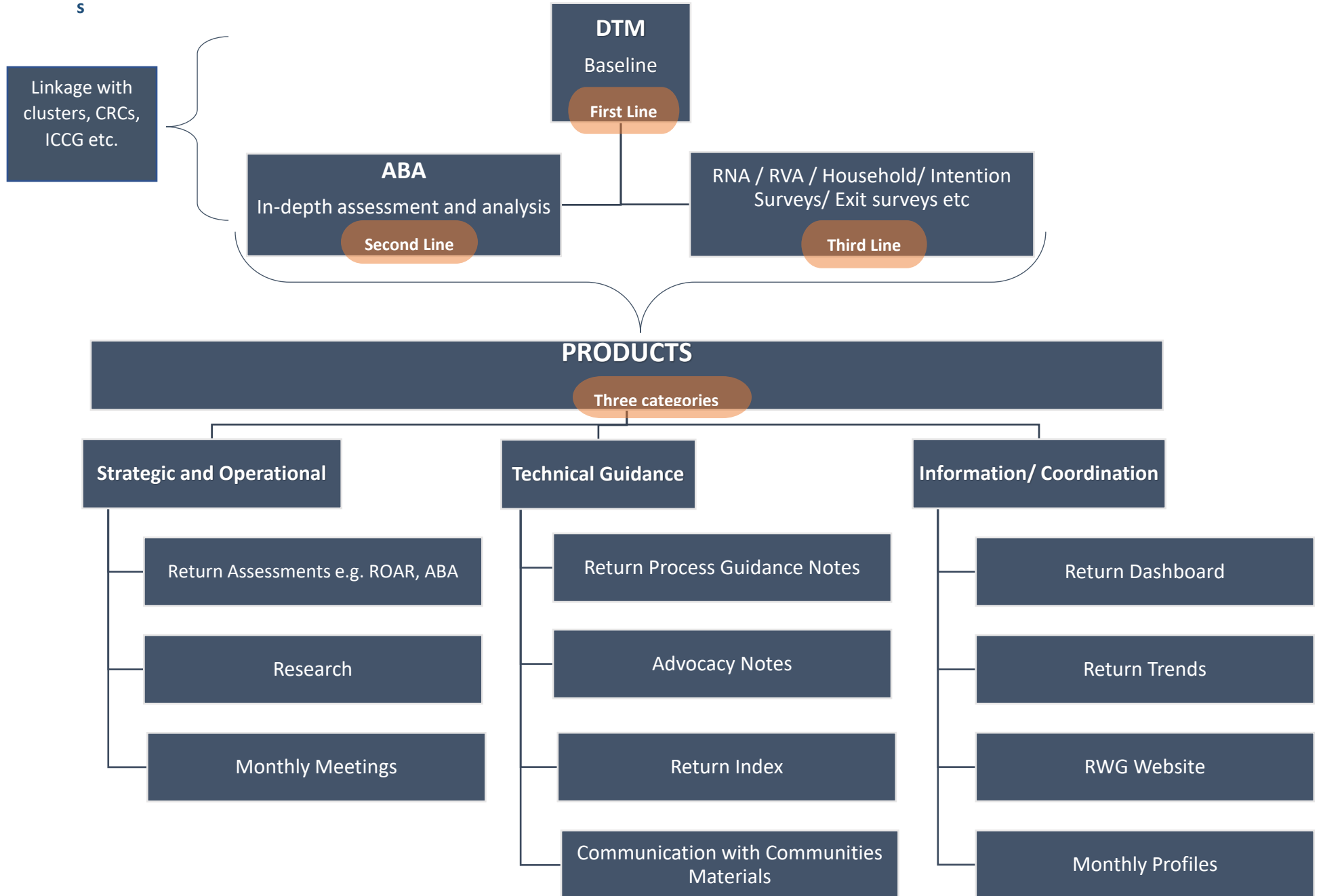




RETURNS WORKING GROUP (RWG): INFORMATION MANAGEMENT FRAMEWORK

S





RETURNS WORKING GROUP (RWG): INFORMATION MANAGEMENT FRAMEWORK

RWG IM FRAMEWORK CONTENT

Introduction	Purpose of the Framework	I. STRATEGIC AND OPERATIONAL	
<ul style="list-style-type: none"> Established by the Returns Working Group, this IM framework aims to provide information to support partners to deliver principled, timely and comprehensive assistance in areas associated with IDP return. This IM framework encourages regular and systematic collection of data relevant to returns, and establishes a common approach of sharing information among RWG members and humanitarian partners working on returns. 	<ul style="list-style-type: none"> Increase understanding of key actors and processes associated with IDP return Identify issues of priority importance to affected communities and individuals Facilitate delivery of principled, timely and comprehensive assistance in areas associated with IDP return Strengthen advocacy efforts around IDP return Support systematic and regular monitoring in areas of IDP return 	Return Area Assessments	Return area assessments (ABA, DTM, etc.) are aligned with the RWG Multi- Sectoral Response Framework and will be conducted in areas witnessing high rates of return or in areas where high numbers of returnees are expected. They aim to inform evidence-based programming and service delivery at the settlement level.
		Service mapping	The RWG together with UNOCHA will maintain regular database on partners providing assistance to returnees at the sub- district level based on key return indicators, as well as the contacts and focal points in each area.
		Research	Based on increasing rate of secondary displacements to camps and out of camps, the RWG will commission a study focusing on secondary returns and aim to determine what is causing the returns to not be sustainable.
		II. TECHNICAL GUIDANCE	
		Return Process Guidance Notes	This will be developed per governorate, given the differing return processes per governorate, and will aim to: <ul style="list-style-type: none"> Create profiles and flowcharts which outline the processes and actors associated with IDP return per governorate. This includes mapping the entire chain of commands of decision makers involved in triggering returns. Increase understanding and accessibility of concerned actors in returns areas through information (actor/power mapping), evidence-based analysis and research;



RETURNS WORKING GROUP (RWG): INFORMATION MANAGEMENT FRAMEWORK

			<ul style="list-style-type: none"> Engage humanitarian, stabilisation, development and reconciliation actors in an exercise aimed at consolidating knowledge and experience regarding the processes and actors associated with IDP return
		Advocacy Notes	This will include key areas of concern on returns at national level, for advocacy to the international community and humanitarian actors, and to highlight actions to be taken to address these specific issues.
		Returns Toolkit	The toolkit will aim to provide partners with a set of tools to guide response to returns at the implementation level, including monitoring conducive return.
		III. INFORMATION/ COORDINATION	
		Returns trends Overview	This will be developed on a monthly basis at national, governorate and sub- district level, and will capture the main trends among returnees, including the key return patterns.
		Monthly Snapshots	Using DTM data as well as data from field partners, the RWG will develop a monthly national dashboard, which will include: Overview of returns per country; Trend of returnees; Key areas of concern; Needs and gaps per sector; Feedback and concerns from returnees; Assessments conducted in return areas
		RWG Website	The RWG will establish a website, which will include all the information in the IM framework, and will be updated on a regular basis to enable the humanitarian community to access the information on returns.